

Inclusive Learning at Hertford Regional College



European Union
European Social Fund
Investing in jobs and skills

hrc

Personalised Programmes

The aim of the Inclusive Learning Department at Hertford Regional College is to offer programmes of study to young people, which support them to gain the skills and knowledge they need to make a successful transition to adulthood.

Each student's programme is personalised and is based on identifying the areas of learning that are most relevant to their future lives.



What can students learn at HRC?

Depending on your priorities for learning and future aspirations, young people may enrol on:

- **Learning for Living –**
a programme for young people with complex and severe learning difficulties whose priority is to develop their communication skills, increase participation and develop the social, personal and practical independence skills they need to live as independently as possible in the future.
- **Learning for Living and work –**
this programme is for young people with moderate to severe learning difficulties who need support to develop their social and communication skills, increase their ability to live independently and begin to think about possible work options and progression routes for the future.



All of our students now have at least four days provision. For complex needs students this may be five days a week.

- **Launch to further study and work** – this course is for young people with moderate learning difficulties who need support to develop their personal and social skills, as well as independence, in order for them to live and work as independently as possible in future.

This course will focus on developing employability skills and enabling young people to develop the skills and understanding to make meaningful choices about work options. This might be preparing for supported or open employment and or develop the skills to access further learning, possible within mainstream college, to support their vocational aspirations.

The purpose of the HRC programme is to give students the skills they need to have a broad range of pathways into adulthood; to live and learn in their communities and be active citizens. This means being part of their community, living as independently as possible, taking part in work or vocational activity and being healthy and happy. The curriculum is structured into four Learning Areas:

- Community Inclusion.
- Employment.
- Independent Living.
- Health and Wellbeing.



Support for Learning

Students' support requirements are assessed by our team of specialists. Examples of support that can be provided:

- 'Wrap around support' at the start and end of every day, as well as during lunchtimes and breaks.
- Use of Makaton.
- Multi-sensory activities include art, drama, cooking and music therapy.
- Peg and tube feeding.
- Support to manage epilepsy and diabetes.

A range of just some of our facilities:

- Assistive technologies.
- Disabled toilets.
- Personal care rooms with hoist and tracking.
- Quiet room.
- Accessible kitchens.
- Secure, calm courtyard away from the main campus for those with complex needs.
- Wide range of community partners including local employers, charities, social enterprises and voluntary sector organisations.



Where are we?

Situated in the centre of Ware, a small historic town, HRC is in an ideal location: with both very easy transport links for students to prepare for independent living, and small friendly independent shops and cafes where the students can be introduced to independent living or a work placement and in a friendly and safe atmosphere.

Find out more

Open Days for your diary...

If you are interested in coming to visit HRC, finding out more about what we offer, or want to discuss your son/daughter's needs then please contact one of our team.

Our Department Administrator, Jackie Wallace, can be contacted:

By phone on: **01992 411850**

Or on email: **jwallace@hrc.ac.uk**

She will be pleased to direct your queries to the appropriate person. We look forward to hearing from you.

13th November 2014

5:30 pm - 8:30 pm

7th February 2015

10am - 3pm

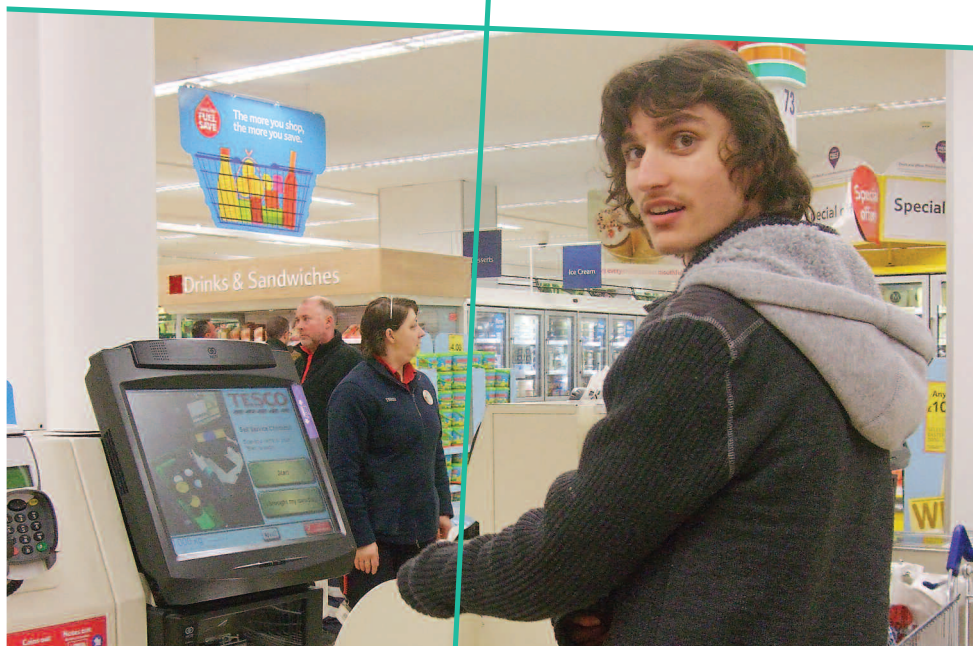
28th April 2015

5.20pm - 8.30pm

Other days available
by appointment.

www.hrc.ac.uk/inclusive

Millbrook,
Hertford Regional College,
Ware, SG12 9JF





Hertford Regional College

Ware Campus, Scotts Road, Ware, Herts, SG12 9JF.

Tel: 01992 411850 Email: jwallace@hrc.ac.uk

© Hertford Regional College 2014